

Your business partner with software solutions for:

- **Website Creation and Launch**
- **Process/Project Tracking**
- **Incoming Shipment Tracking**
- **Bar Code Label Printing**
- **Item Tracking**
- **Data File Analysis Tools**
- **File Backup and Transfer**
- **Custom Programming**

Custom PC Programming

www.custompcprogramming.com

Your effective approach to conversion and analysis of test & measurement data

937/239-7170

cPCp DataCrusher™ greatly reduces the time and effort required to process data files and compile statistical data gathered through monitoring or measuring equipment, reading and transforming multiple raw data files into time-tracked graphical histograms and displays all relevant statistical information.

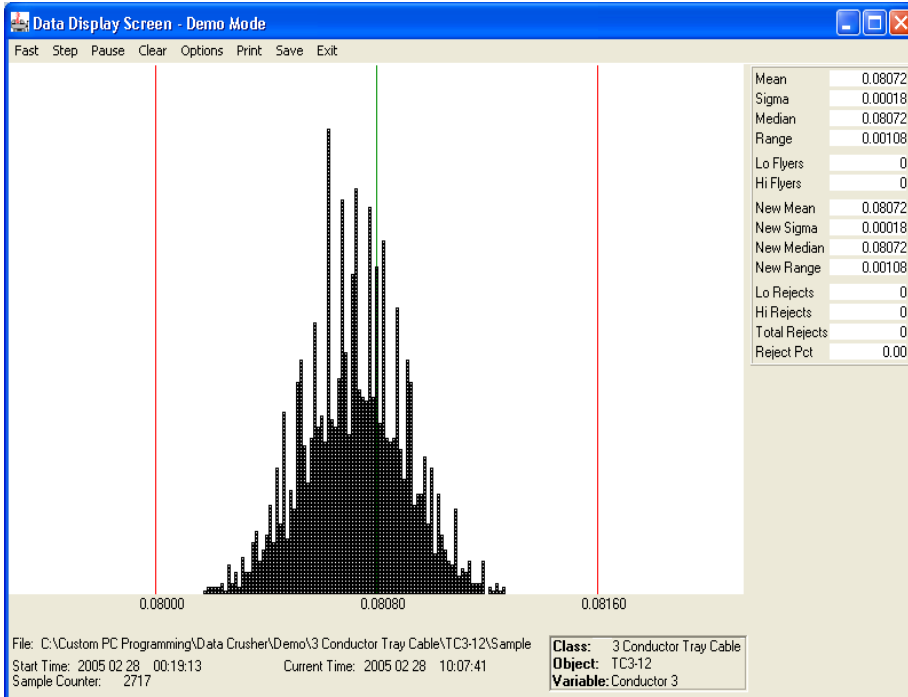
Compared to common methods of importing raw data files into spread sheet programs and creating the desired output, **cPCp DataCrusher™** produces detailed results nearly instantaneously. Single product run histograms are created one data point at a time with a time stamp attached to each point, providing the capability of monitoring processes as they unfold. Data from up to 100 different files can be charted at one time to show important historical trend data. Following a simple, one-time file format set-up, test or measurement data can be manipulated immediately using easy point-and-click methods. Statistical data and graphical output are literally only a few seconds away.

Some additional functional capabilities are detailed in this literature. It will be evident that the exercise of data analysis will realize significant productivity gains through the use of **cPCp DataCrusher™**. To further illustrate the value and benefits provided by **cPCp DataCrusher™**, a demonstration program is available upon request which show that the benefits provided by the software would be very complementary to any data collection system.

An easy-to-use statistical software package, **cPCp DataCrusher™** was created not for statisticians or mathematical theorists but for production managers, quality and test personnel, and engineers. Designed especially to track and translate large quantities of test data files, **cPCp DataCrusher™** provides valuable insight into the nature and direction of a product or process.

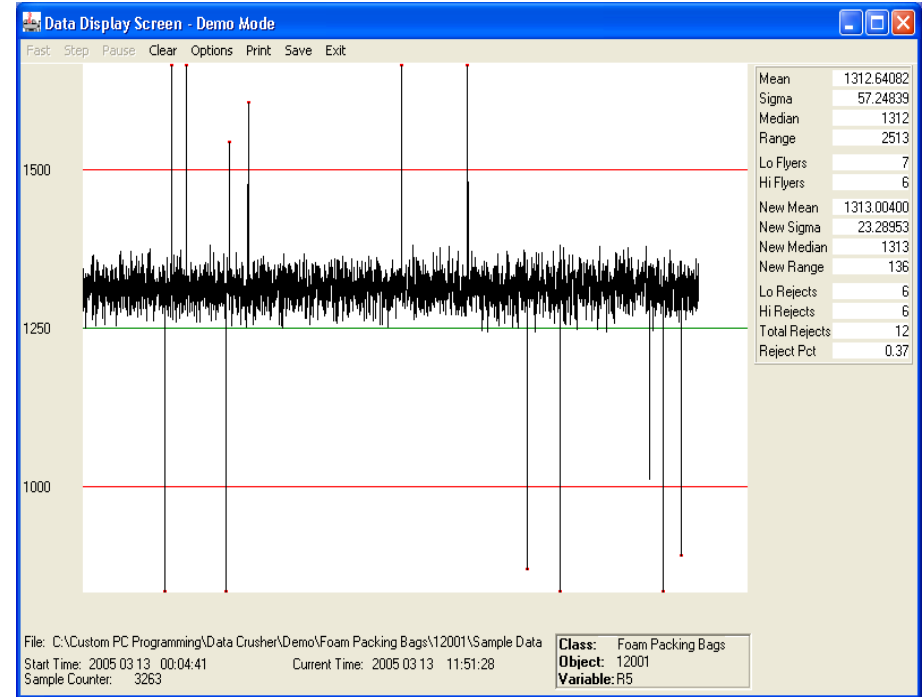
With a practical and clear presentation of processed time-based data, **cPCp DataCrusher™** picks up where spreadsheet programs leave off and almost instantly provides a statistical and graphical summary to assist analysis in troubleshooting, debugging, and optimizing both product and process. Additionally, **cPCp DataCrusher™** is used also to track production output, determine process capability, and monitor scrap reduction efforts.

- Performs detailed statistical calculations on existing data files including statistical mean, median, standard deviation, and range
- Provides option of (3) different file analysis options, including single file standard histogram generation, result vs. time, and multiple file analysis on up to 86 files to provide vital data trend information
- Compares results to target values and determines percentage of non-conformance and Cpk data
- Establishes incidence of data outliers (flyers) according to user-defined criteria and recalculates statistics excluding flyers
- Evaluates up to 100,000 individual data points in less than a minute
- Simple one time setup of any number of unique data file formats
- Detailed Help System and demo data provided to facilitate user training
- User defined output format
- Three hours programming/telephone support included – extensive customizing available
- Multi-station and network licenses available



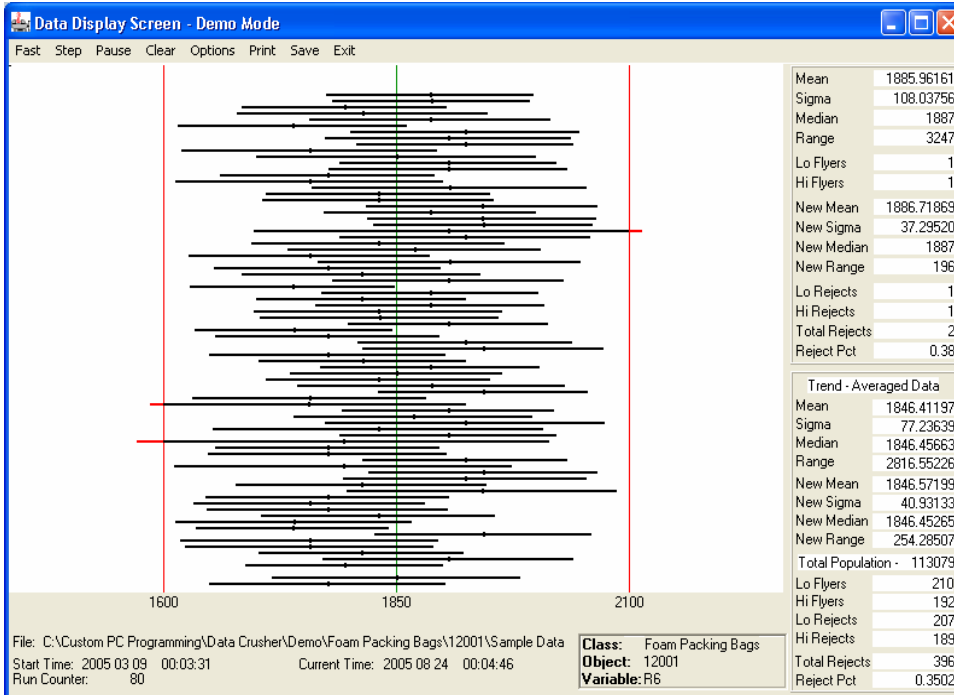
SINGLE FILE STANDARD HISTOGRAM

- Produces histogram one data point at a time from single data file
- Generates plots forward and backward at variable speeds, pauses, and steps through data file to isolate time-relevant data trends
- Displays data point time stamp for individual samples by dragging cursor over data marker



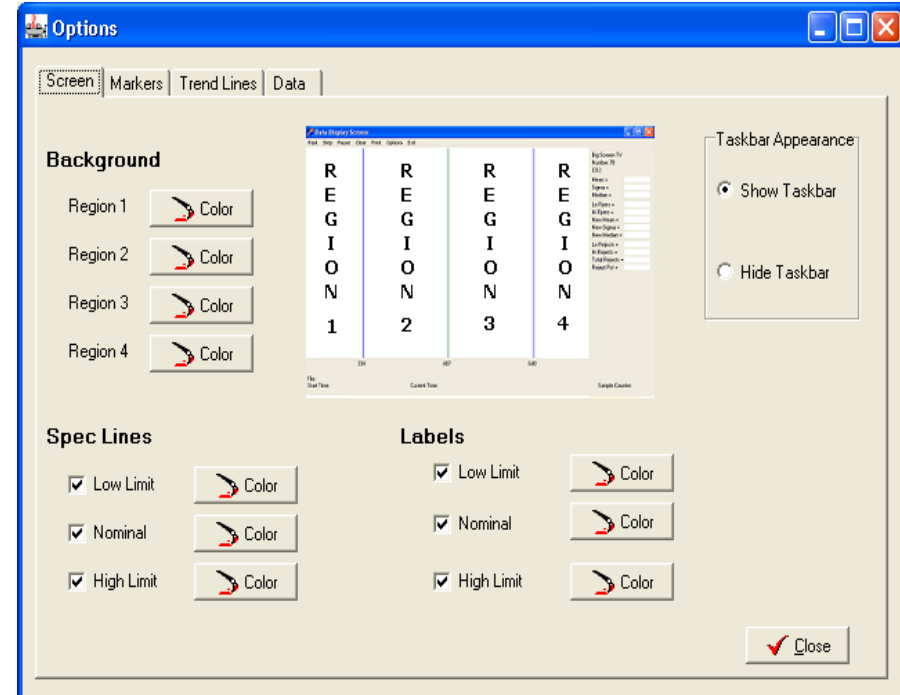
RESULT VS. TIME

- Charts result data in chronological order to illustrate time-relevant data trends
- Displays data point time stamp for individual samples by dragging cursor over data marker



MULTIPLE FILE ANALYSIS

- Plots multiple file results simultaneously to identify long term data trends
- Generates plots forward and backward at variable speeds, pauses, and steps through data files to isolate time-relevant data trends
- Displays file time stamp by dragging cursor over individual file data line
- Calculates line lengths to represent 6 x sigma, data range, or a combination of the 2 as specified by the user
- Toggles to histogram screen by clicking individual file data line



OPTIONS SCREEN

Among the many features offered by the Options screen:

- Specify background color independently in all regions of the screen for easy discrimination
- Select from a number of data point marker types
- Assign zone dependent colors to lines and markers